



The next phase underway –
we need your help protecting these headwaters.

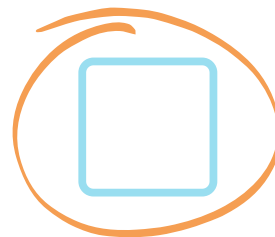
Photo: ©Geoffrey Smith



158+ Acres
PROTECTED



375+ acres
critical habitat
IDENTIFIED



**HELP US
SUPPORT**
this acquisition



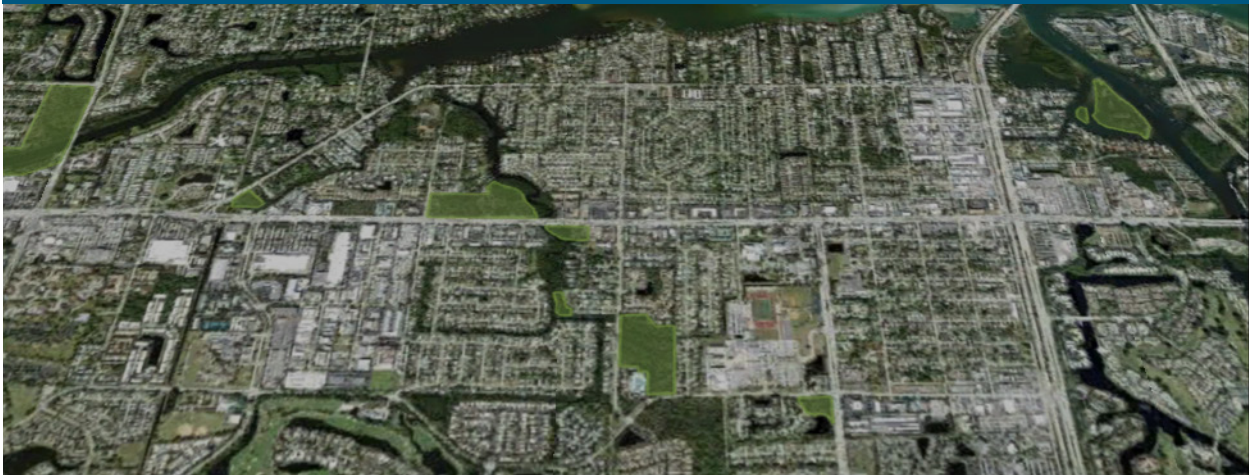
For decades, the State of Florida and its residents in southern Martin County and northern Palm Beach County have been working to protect a mosaic of wetland marshes and low-elevation pinelands that are critical to maintaining healthy watersheds of the Loxahatchee River and South Fork of the St. Lucie River.

WHY IT'S IMPORTANT

Over-development threatens this fragile ecosystem.

Indiantown Road - Gateway to Jupiter

East of I-95, view looking north



Bridge Road - Gateway to Hobe Sound

East of I-95, view looking north



LOXA-LUCIE (LL) POTENTIAL PHASE 3

The next step in headwater lands protection.



Help support our efforts to protect the Bridge Road corridor and the headwaters of the Loxahatchee and St. Lucie Rivers! We are currently working with willing sellers to acquire the **next potential acquisitions**. These properties would help protect more land on Bridge Road, help restore wetlands, and act as a natural hydrological connection to the Loxahatchee River. They will also help connect a corridor for the wildlife that depend on these connected ecosystems of the Atlantic Ridge Preserve State Park and Jonathan Dickinson State Park.

TOGETHER, WE CAN...



...prevent urban sprawl



...Provide a vital corridor for wildlife



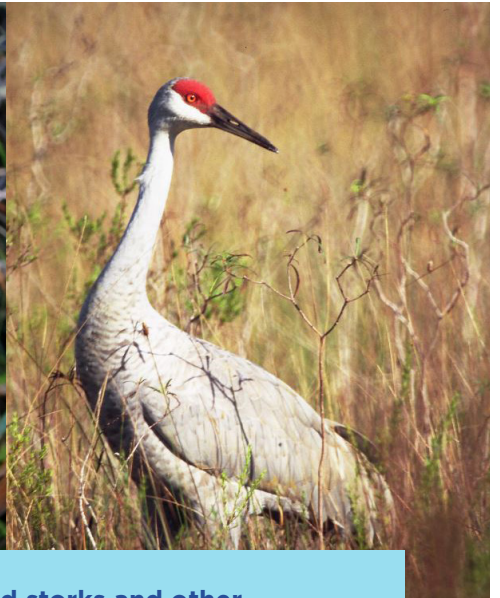
...restore degraded wetlands



...manage the demand for freshwater



...enhance aquifer recharge & improve water flow to the Loxahatchee and St. Lucie Rivers



The Loxa-Lucie headwaters are home to bobcats, wood storks and other wading birds, endangered plants, carnivorous plants, and many others.



This Project has been endorsed by:

- Audubon of Martin County
- The Friends of Jonathan Dickinson
- The Hobe Sound Golf Club
- The Indian River Lagoon National Estuary Program
- The Town of Jupiter Island
- The Jupiter Island Historical Society
- The Jupiter Island Residents Assn.
- The Loxahatchee River Management Coordinating Council
- The Martin County Chapter of the Florida Native Plant Society
- The Martin County Commission
- Jupiter Island Garden Club
- Center for Plant Conservation
- The Rivers Coalition
- The Garden Club of Stuart
- Medalist Village Association

For a list of all our current endorsements see our website.

Help support these crucial headwaters - donate today.



To make your tax-deductible contribution, visit loxalucieheadwaters.org
 Donation by check: Please designate your gift by including Loxa-Lucie Headwaters FL #27431 on the reference line and mail to:

Matthew S. Sexton
 Senior Vice President, Conservation Acquisitions
 18 Middle Road
 Stuart, Florida 34996

