



HELP US
SUPPORT

The next phase underway –
we need your help protecting these headwaters.

Photo: ©Geoffrey Smith



Initial
138 acres
PROTECTED



20 acres of
valuable land
IDENTIFIED

the Initiative

working to protect a mosaic of wetland marshes and low-elevation pinelands that are critical to maintaining healthy watersheds of the Loxahatchee River and South Fork of the St. Lucie River.

WHY IT'S IMPORTANT

Indiantown Road– Gateway to Jupiter

East of I-95, view looking east from intersection with Central Blvd.

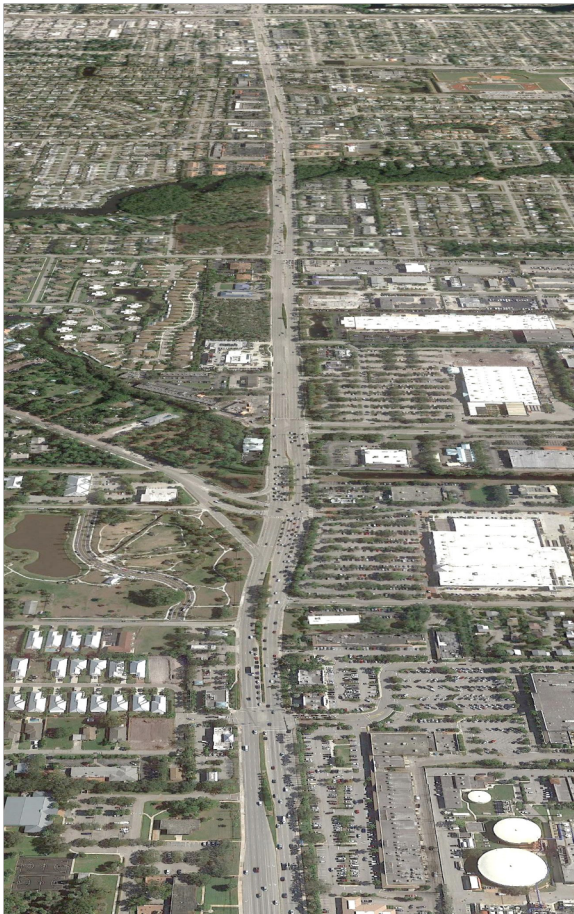
Bridge Road – Gateway to Hobe Sound

East of I-95, view looking east



For decades, the State of Florida and its residents in northern Palm Beach County and southern Martin County have been
Over-development threatens this fragile ecosystem.

Date of photo: January 13, 2019 Source: Google Earth



Date of photo: January 13, 2019 Source: Google Earth



LL PHASE 2

The next step in headwater lands protection.



Help support our efforts to protect and restore the Bridge Road corridor and the headwaters of the Loxahatchee and St. Lucie Rivers! We are currently working with willing sellers to acquire properties in the project boundary including the Phase 2 property in the map above. The acquisition, restoration and management of these properties will help restore wetlands, act as natural hydrological connections and create corridors for the wildlife that depend on the ecosystems of the Atlantic Ridge Preserve and Jonathan Dickinson State Parks.

TOGETHER, WE CAN...



...prevent urban sprawl



...Provide vital corridors for wildlife



...restore degraded wetlands



....manage the demand for freshwater



...enhance aquifer recharge & improve water flow to the Loxahatchee and St. Lucie Rivers



The Loxa-Lucie headwaters are home to bobcats, wood storks and other wading birds, endangered plants, carnivorous plants, and many others.



This Project has been endorsed by:

- Audubon of Martin County
- The Friends of Jonathan Dickinson
- The Hobe Sound Golf Club
- The Indian River Lagoon National Estuary Program
- The Town of Jupiter Island
- The Jupiter Island Historical Society
- The Jupiter Island Residents Assn.
- The Loxahatchee River Management Coordinating Council
- The Martin County Chapter of the Florida Native Plant Society
- The Martin County Commission
- Jupiter Island Garden Club
- Center for Plant Conservation

For a list of all our current endorsements see our website.

Help support these crucial headwaters - donate today.



To make your tax-deductible contribution, visit loxalucieheadwaters.org
 Donation by check: Please designate your gift by including Loxa-Lucie Headwaters FL #27431 on the reference line and mail to:

Matthew S. Sexton
 Senior Vice President, Conservation Acquisitions
 18 Middle Road
 Stuart, Florida 34996



THE
CONSERVATION FUND

